

Xpert MTB/RIF ® implementation in MSF projects

First results

Francis Varaine, Elisa Ardizzoni MSF

GLI meeting

Annecy, 18/04/2012

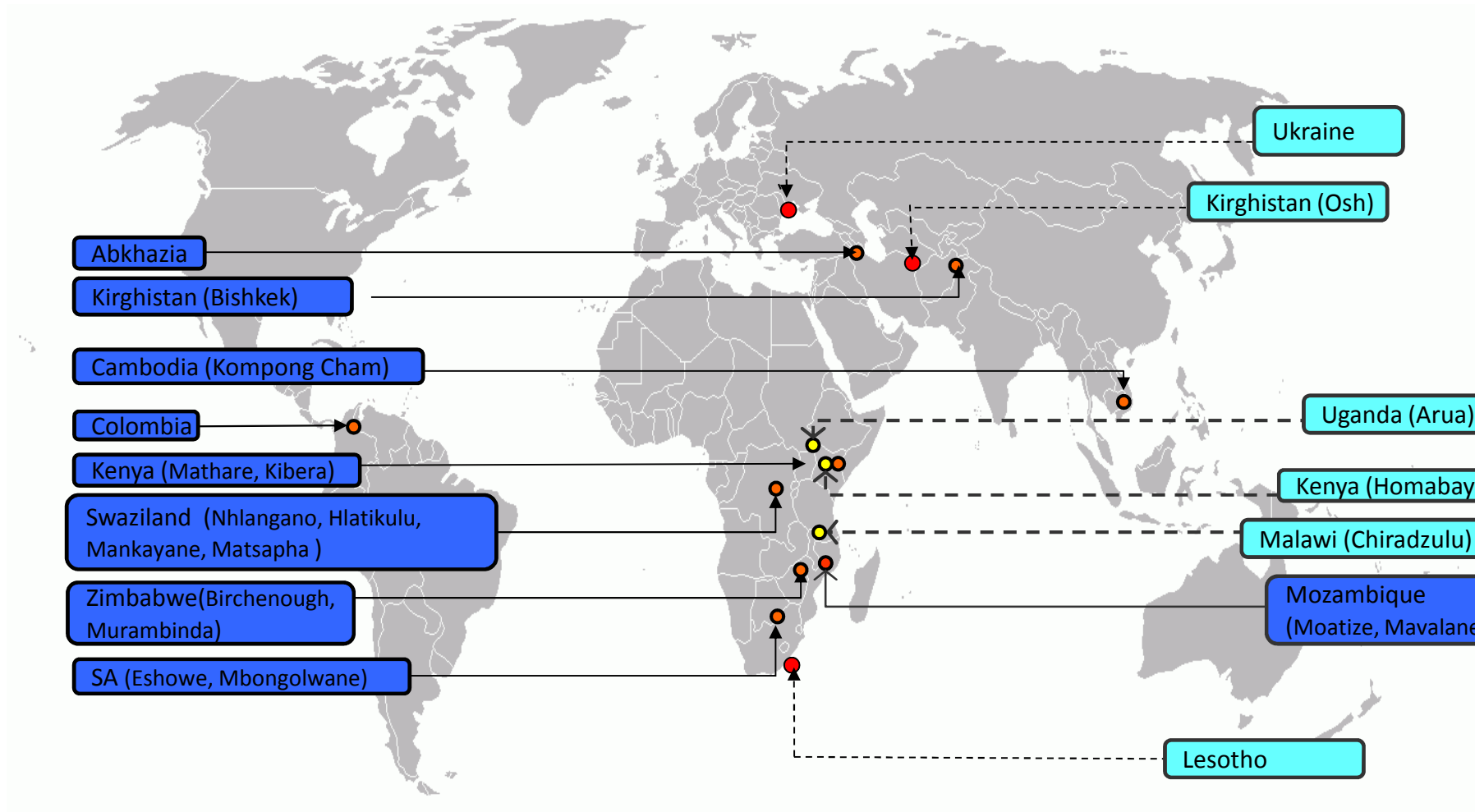
Projects overview

- **First introduced in April 2011**
- **Routine clinical use in 16 projects, in 9 countries by end 2011**
- **Distribution by epidemiological situation**

| | High HIV | Low HIV | Total |
|-----------------|-----------------|----------------|--------------|
| High MDR | 7 | 2 | 9 |
| Low MDR | 6 | 1 | 7 |
| Total | 13 | 3 | |

- **Distribution by health facility level**
 - **Regional** 2
 - **District** 7
 - **Sub-district** 7

Xpert MTB/RIF® introduction



Objectives

- **Xpert MTB+/RIF results in routine MSF projects conditions**
 - Gain in specimens confirmation with Xpert compared to microscopy
 - Description of inconclusive results
- **Practical considerations and lessons learnt**

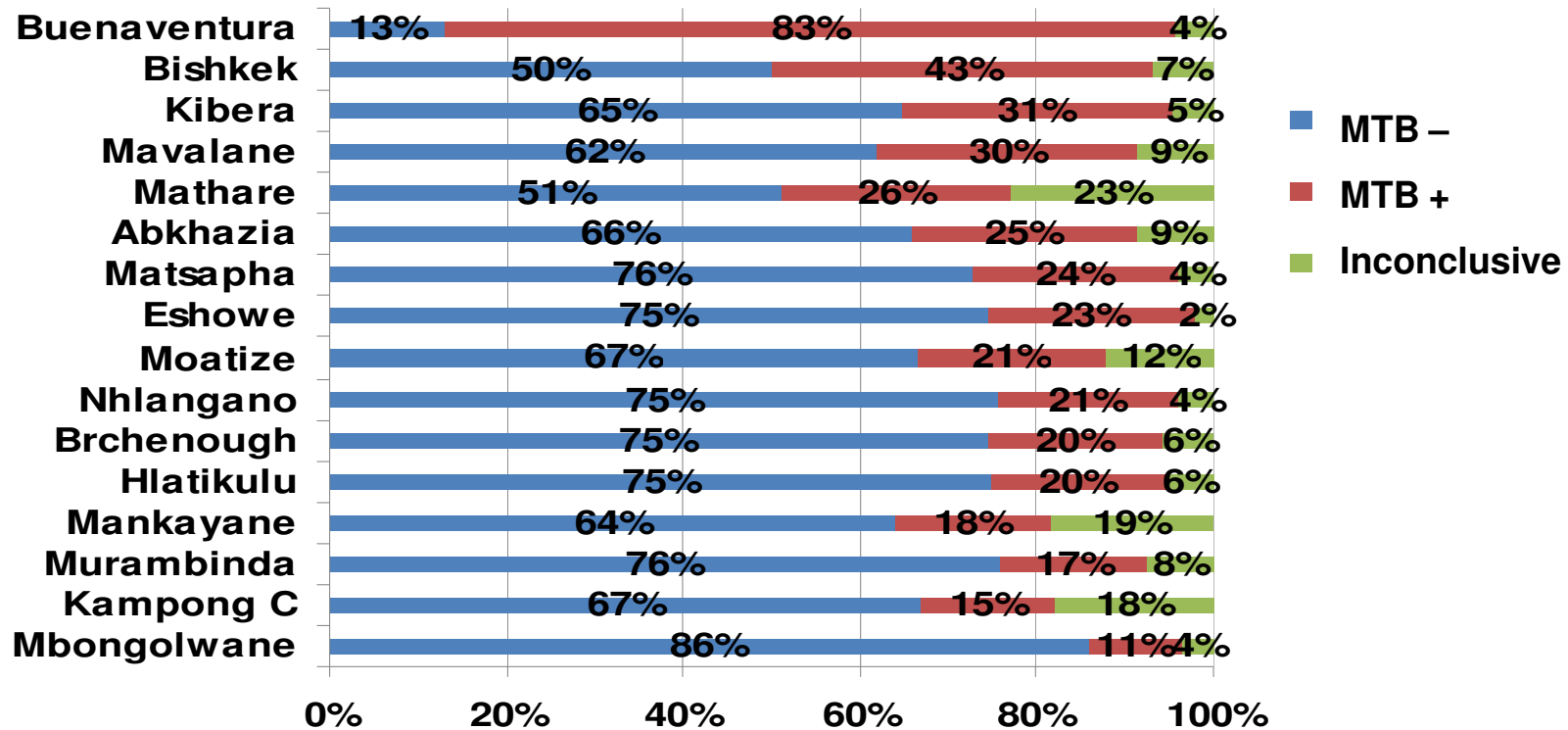
Methods

- **Data from laboratory registers and data system**
- **Sputum smear microscopy (SSM)**
 - Parallel testing in 14 projects
 - Fluorescence in 7 projects
 - Ziehl Neelsen in 7 projects
- **Two periods**
 - Initial period: April-August 2011
 - 2nd period: September-December 2011
- **Definitions**
 - **Positive SSM according to WHO recommendation** ($\geq 1\text{AFB}$)
 - **Relative gain (%)**: additional number of laboratory confirmed samples by Xpert/
number of samples confirmed by SSM
 - **Proportion of inconclusive Xpert results** : number of errors, invalid and no
results/total number of samples tested by Xpert

Results

Xpert MTB results

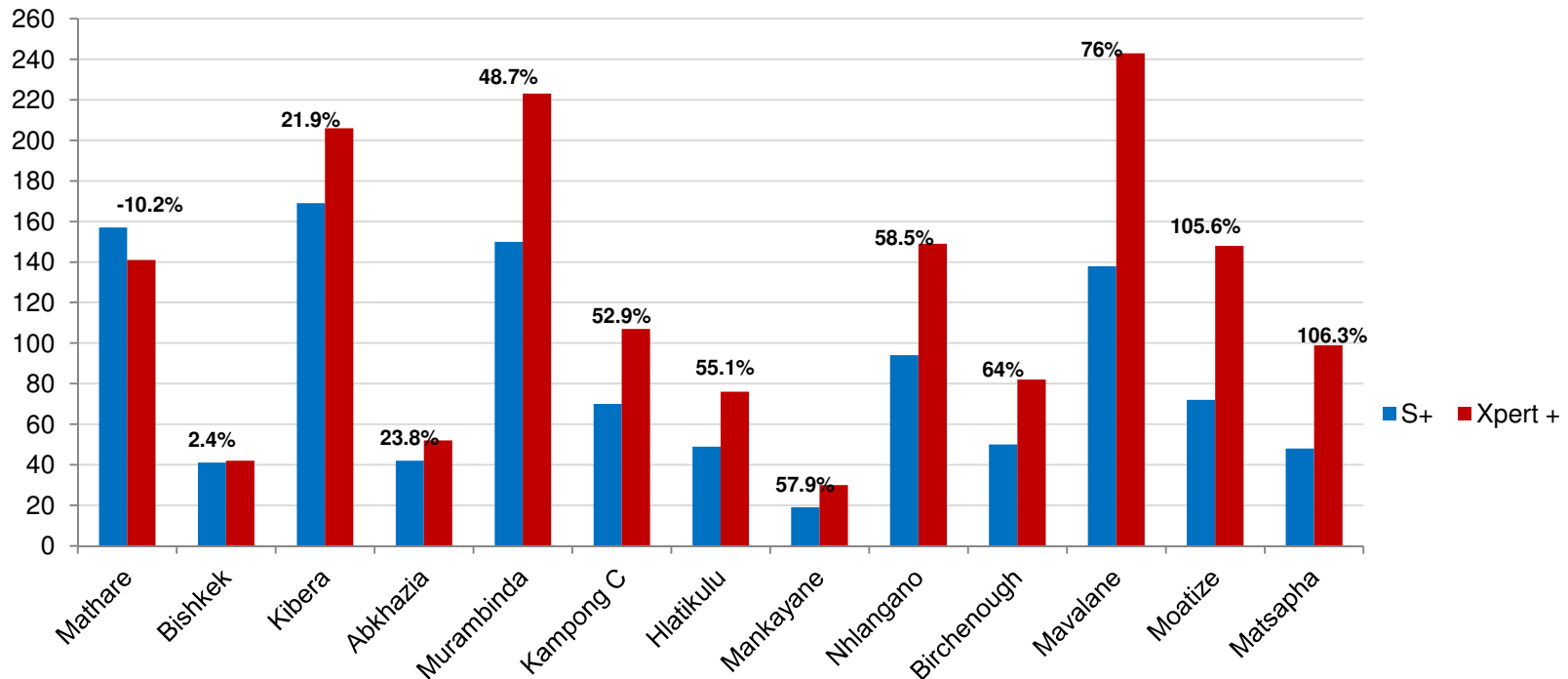
10,960 specimens in 16 projects (Apr-Dec. 2011)



- Different detection strategies
- Average Xpert MTB positivity rate 21% (11 to 43%) MTB+ results (Buenaventura exc.)

Relative gain vs SSM

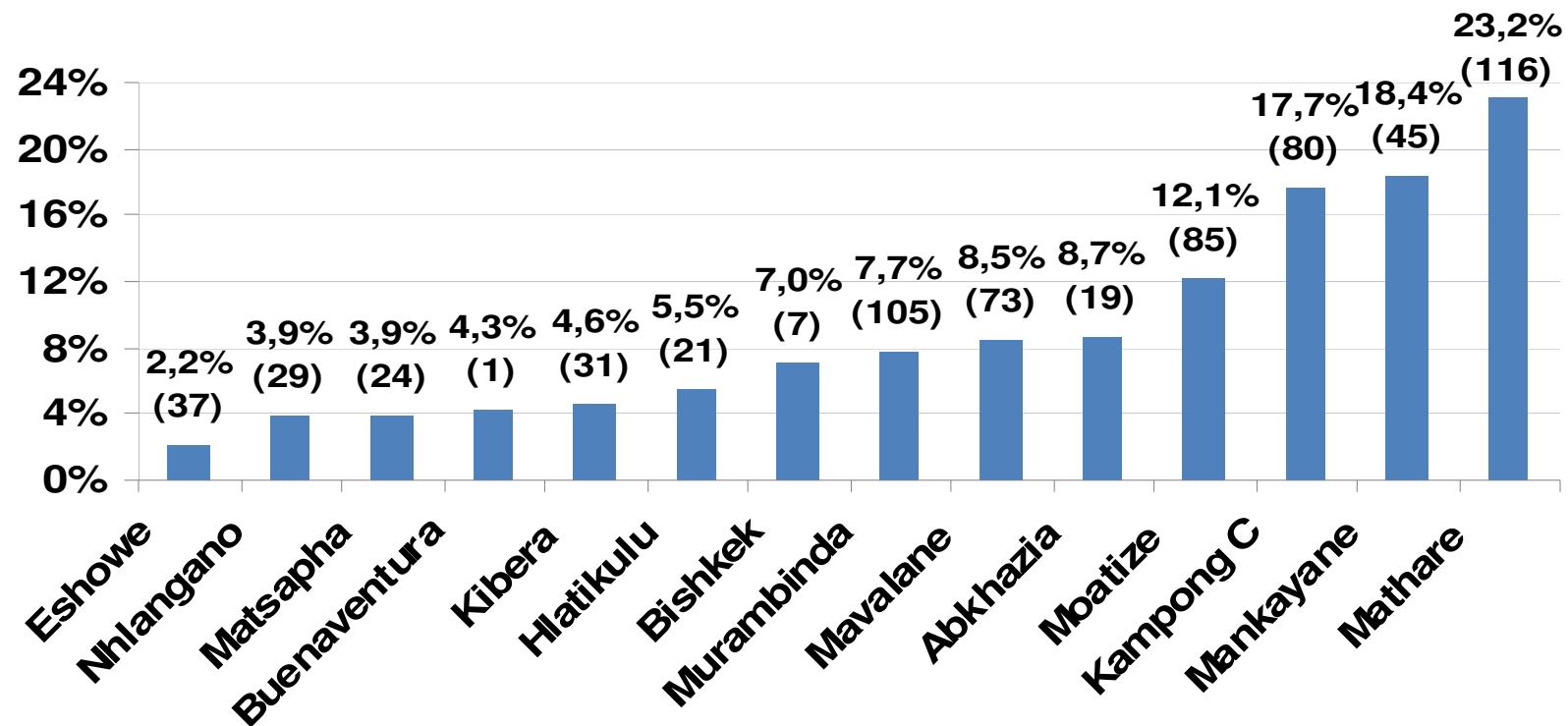
6,981 specimens in 13 projects (Apr-Dec. 2011)



- From 2 to 106% relative gain except for Mathare (-10%)
- 48 % average relative gain (27% vs. FM, 54% vs. ZN)
- Time to result: 1-3 days

Proportion of inconclusive results by projects

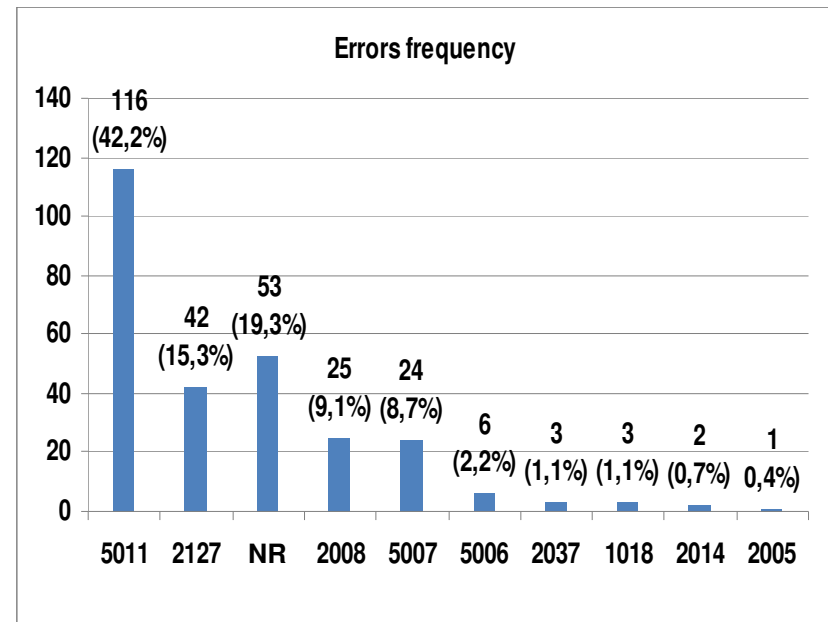
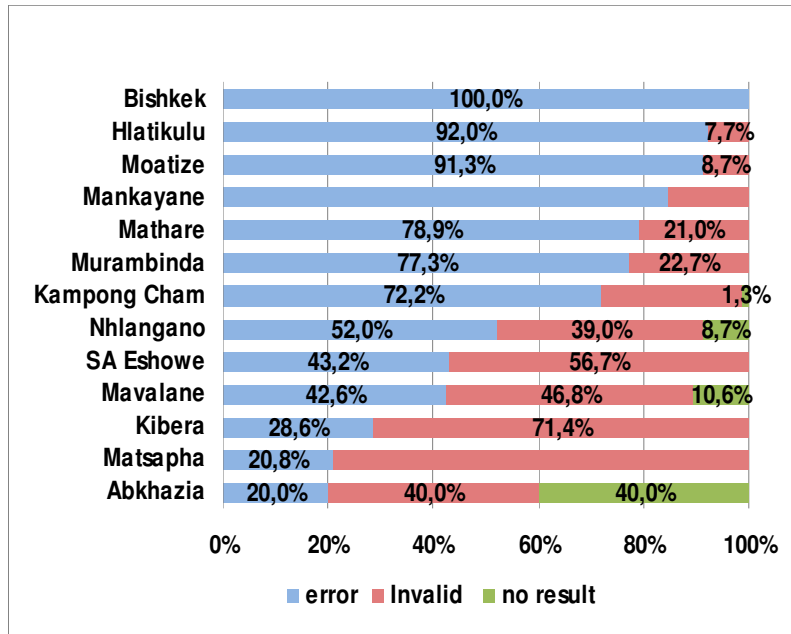
14 projects (Apr-Dec. 2011)



- Average inconclusive results : 7% (2-23%)
- Big variations across projects
- 10 modules changed since April
- Improved over time: Apr-Aug: 10%; Sept-Dec: 5%
- Sept-Dec: inconclusive results >5% in 7 projects

Types of inconclusive results

13 projects (Sept-Dec 2011)



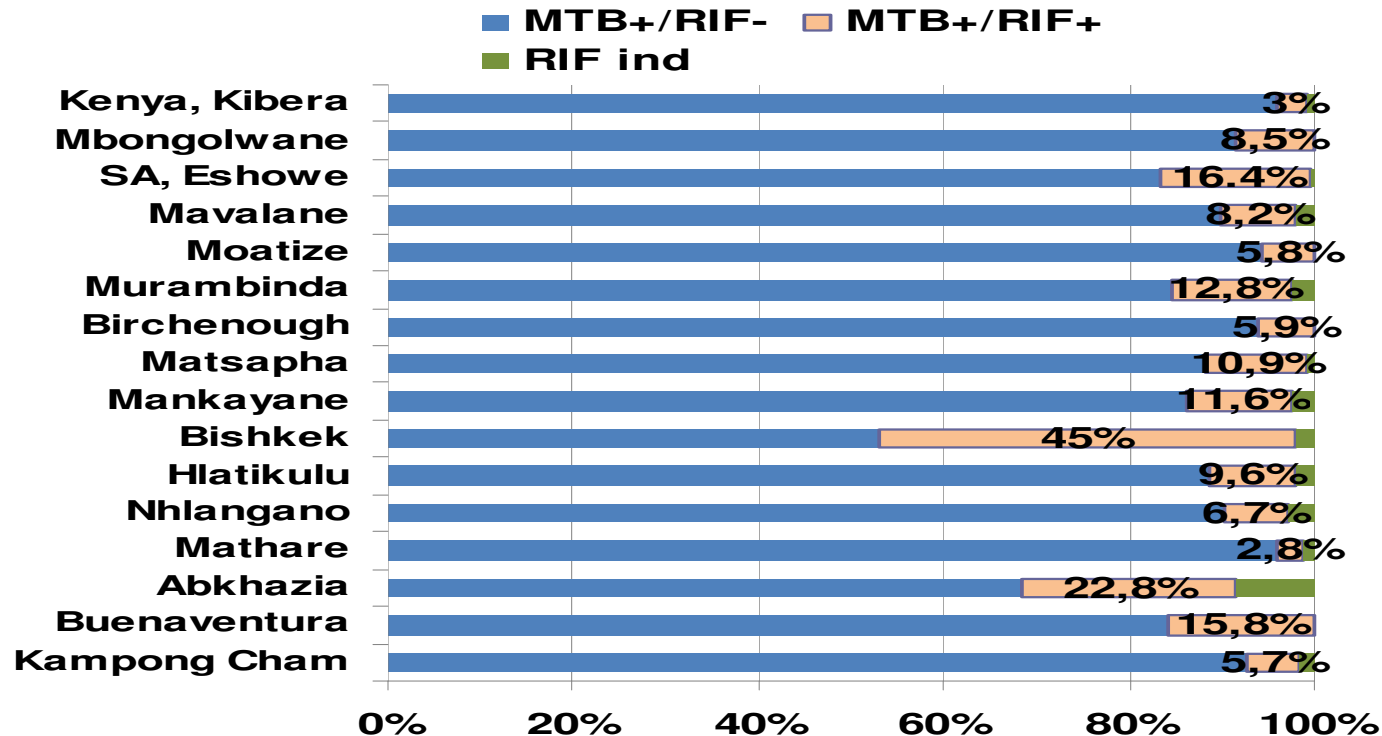
Wide variations across projects

Error: 63% (20-100%), Invalid: 33% (8-71%), No result: 4% (0-40%)

Most common errors: 5011, 2127

RIF results

1,450 MTB+ specimens in 16 projects (Sept-Dec. 2011)



Different detection strategies and Rif resistance prevalences

Proportion of RIF+ ranges 3- 45%

Average RIF indeterminate: 1.4%

Lessons from implementation

- **Relatively easy to use but not «plug and play» device**
- **Logistical and financial investment**
 - Devices and cartridges
 - Stable electricity power
 - Adequate conditions for operating procedures (temperature)
- **Limited decentralization**
- **Training is essential**
 - Specimen preparation
 - Diagnostic algorithms
 - MDR TB treatment
 - Proper data recording and reporting
- **Need for EQA reference laboratories for cultures and DST**

Conclusion

- **Significant increase in laboratory confirmation of TB**
- **Rapid screening of RIF resistant TB**
- **Real improvement in TB diagnostic**

- **High rates of inconclusive MTB results**
 - Still above 5% in 7/14 sites
 - Loss of confidence

Cost is a major barrier

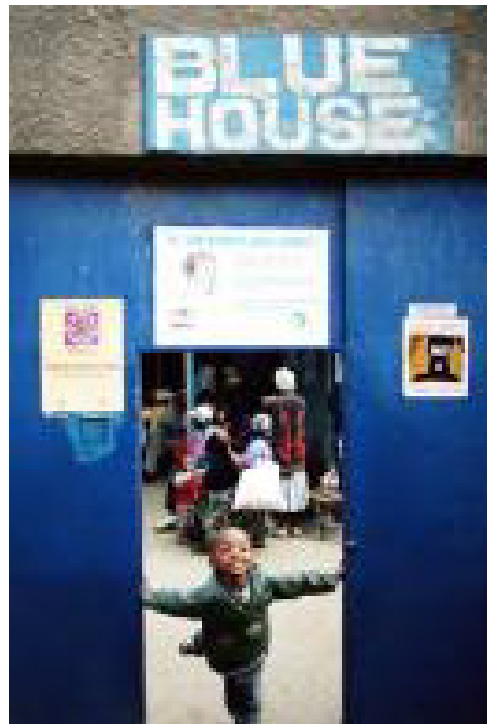
Recommendations

- **Need impact studies on patients outcomes**
 - Time to treatment initiation
 - Impact on case detection
 - Impact on case management
- **Need cost effectiveness studies**

Continue research for a non sputum based POC test

Thank you

Thanks to:
Emmanuel Fajardo
Peter Saranchuck
Pamela Hepple
Roberto De la Tour
Céline Lastrucci



Results by SSM techniques

From 7 projects after 4 months introduction phase

Fluorescence microscopy (5 projects)

| FM | Xpert MTB+ | Xpert MTB- | Not Interpretable | Total |
|-------|------------|------------|-------------------|-------|
| SSM+ | 292 | 16 | 23 | 331 |
| SSM- | 130 | 1204 | 130 | 1465 |
| TOTAL | 422 | 1220 | 153 | 1796 |

Positivity rate Xpert : 23% FM : 18% (p<0.001)

Relative increase vs. FM : 28 %

Ziehl Neelsen (2 projects)

| ZN | Xpert MTB+ | Xpert MTB- | Not Interpretable | Total |
|-------|------------|------------|-------------------|-------|
| SSM+ | 49 | 3 | 2 | 54 |
| SSM- | 34 | 296 | 32 | 362 |
| TOTAL | 83 | 299 | 34 | 416 |

Positivity rate Xpert: 20% ZN: 13% (p<0.001)

Relative increase vs. ZN : 54 %