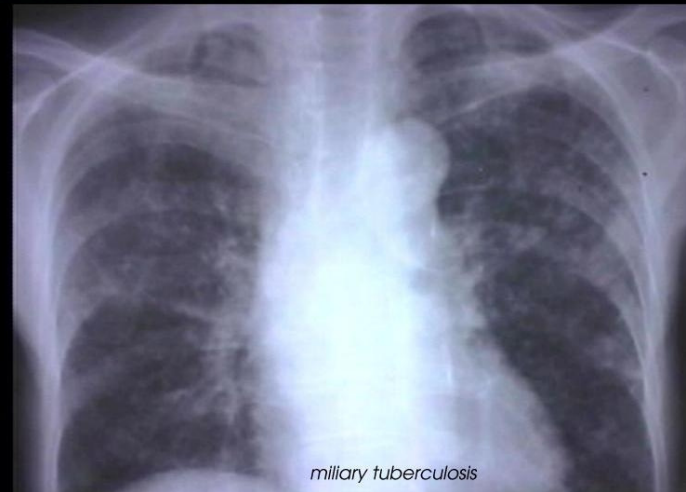
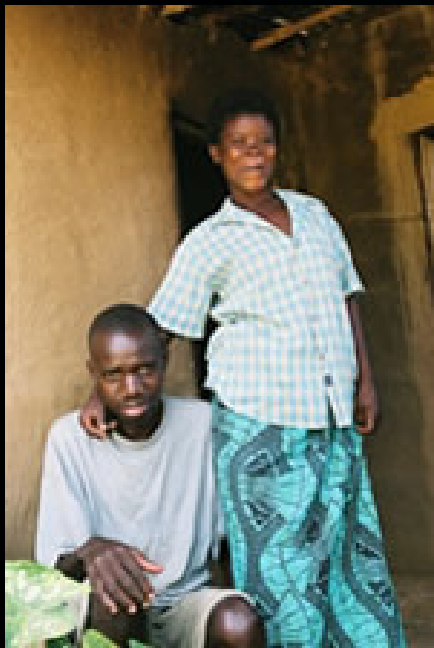


Catalyzing HIV and TB Research

Diane V. Havlir, MD
University of California, San Francisco
Chair, WHO HIV/TB Working Group, Stop TB



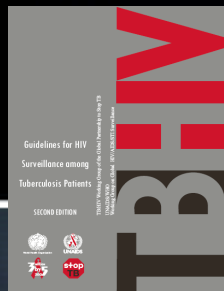
HIV/TB: Current Landscape

- 1.37 million new cases of TB in HIV+ population in 2007
- TB one of greatest threats to success of ART
- TB burden in HIV population is a major obstacle in realizing global TB reductions

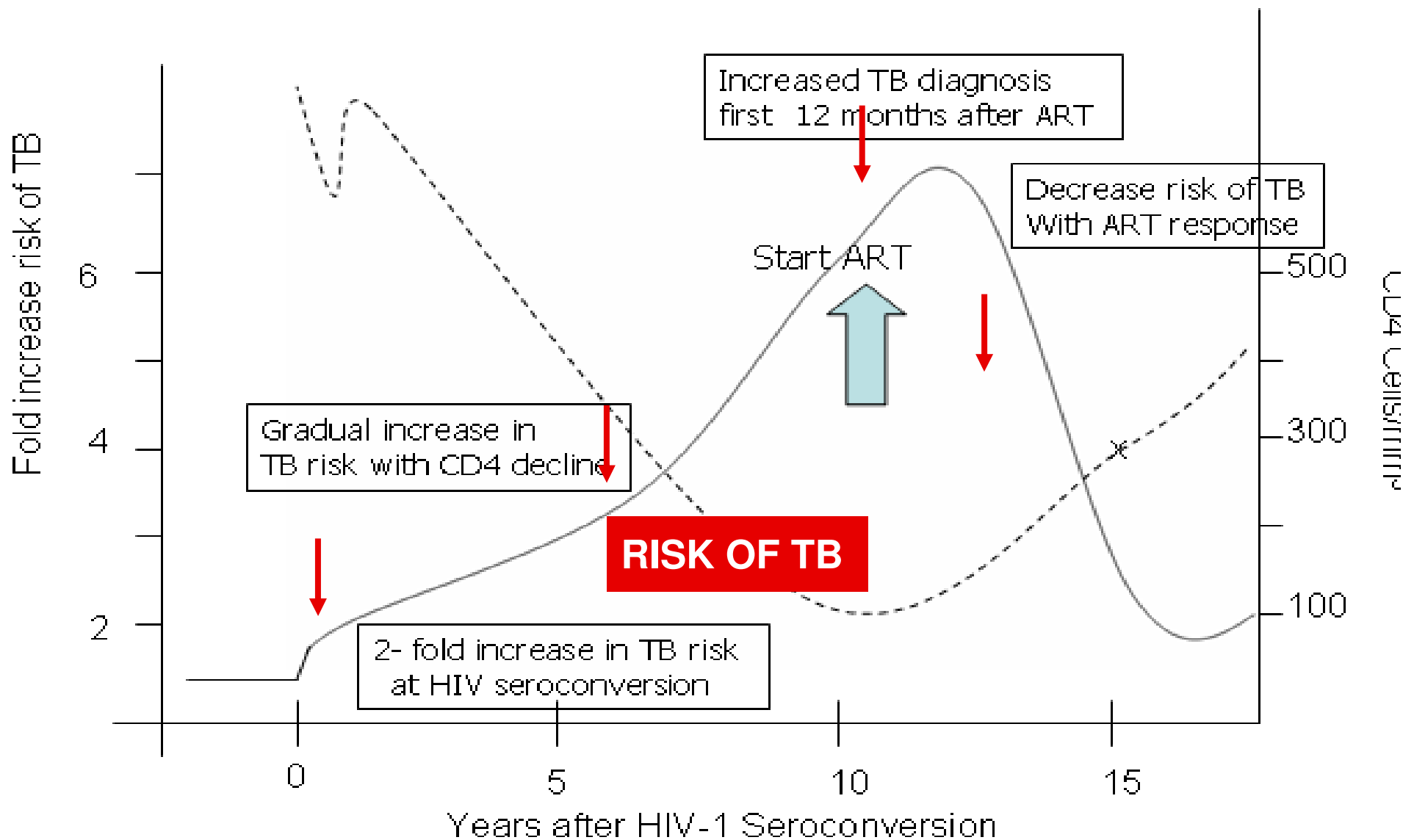
WHO HIV/TB Working Group Goals and Vision



- Universal HIV testing in TB clinics
- Expansion of TB case finding in HIV clinics
- TB prevention through IPT and infection control
- Prevention and treatment of MDR/XDR
- Increased models of integrated HIV/TB care
- Investment in TB/HIV research – children included



TB POSES A RISK IN HIV THROUGHOUT THE COURSE OF DISEASE



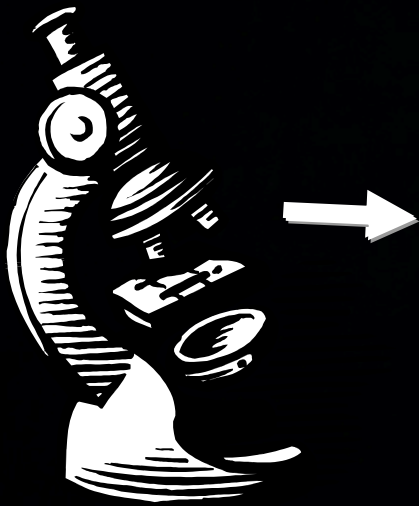
Prevention Strategies for TB among persons with HIV

- INH and beyond
- Antiretroviral therapy
- Identification and treatment of active cases
- TB vaccines

Infection Control in TB

- TB is being transmitted in the health care setting between patients
- Approximately half of cases of recent XDR outbreak of TB in South Africa were acquired in health care setting
- HCW are 5 fold more likely to acquire TB compared to general population
- Innovative and strategic approaches are needed

TB Diagnosis: Momentum



Point of
care
dipstick

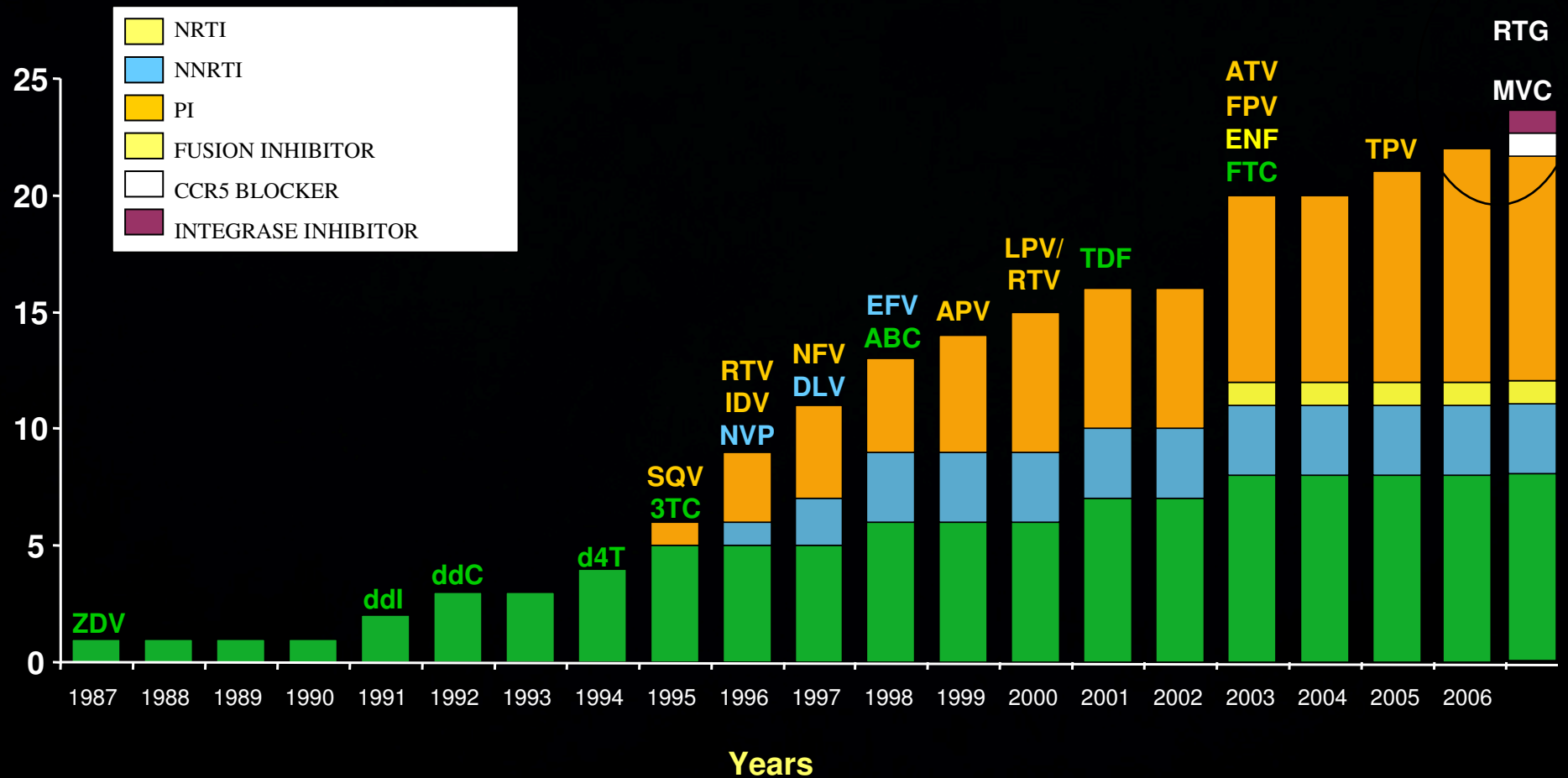
When to Start ART during TB treatment

	A5221/STRIDE	CAMELIA	SAPIT
N	634/800	660/660	429/429
SITES	Africa, Asia, SA, NA	Cambodia	South Africa
ARMS	Imm vs 8-12	Imm vs 8	Imm vs 8-24
ENDPT	Death, AIDS	Death	Death

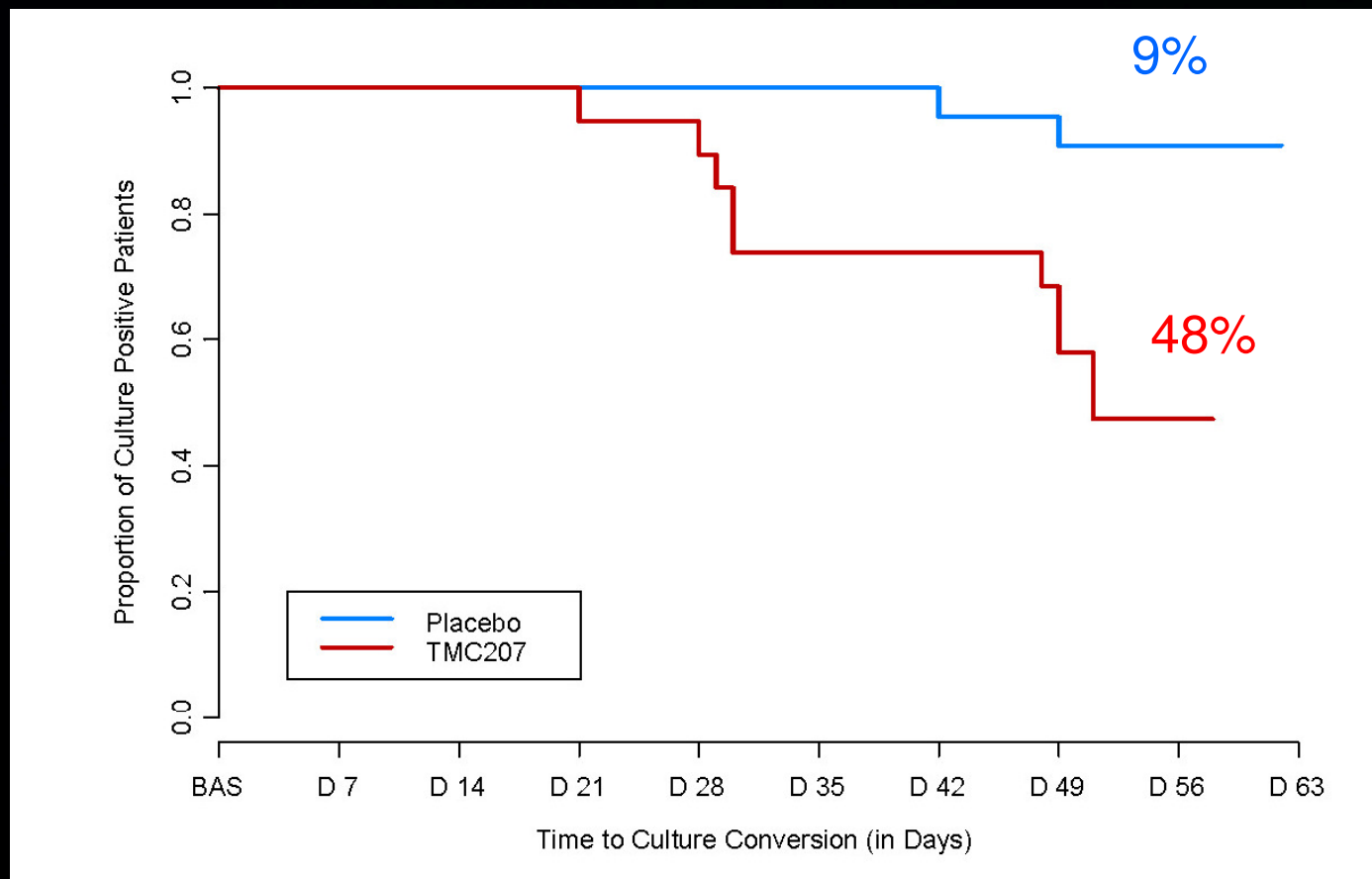
TB Drug Development 1944-2009



Antiretrovirals 1987-2009



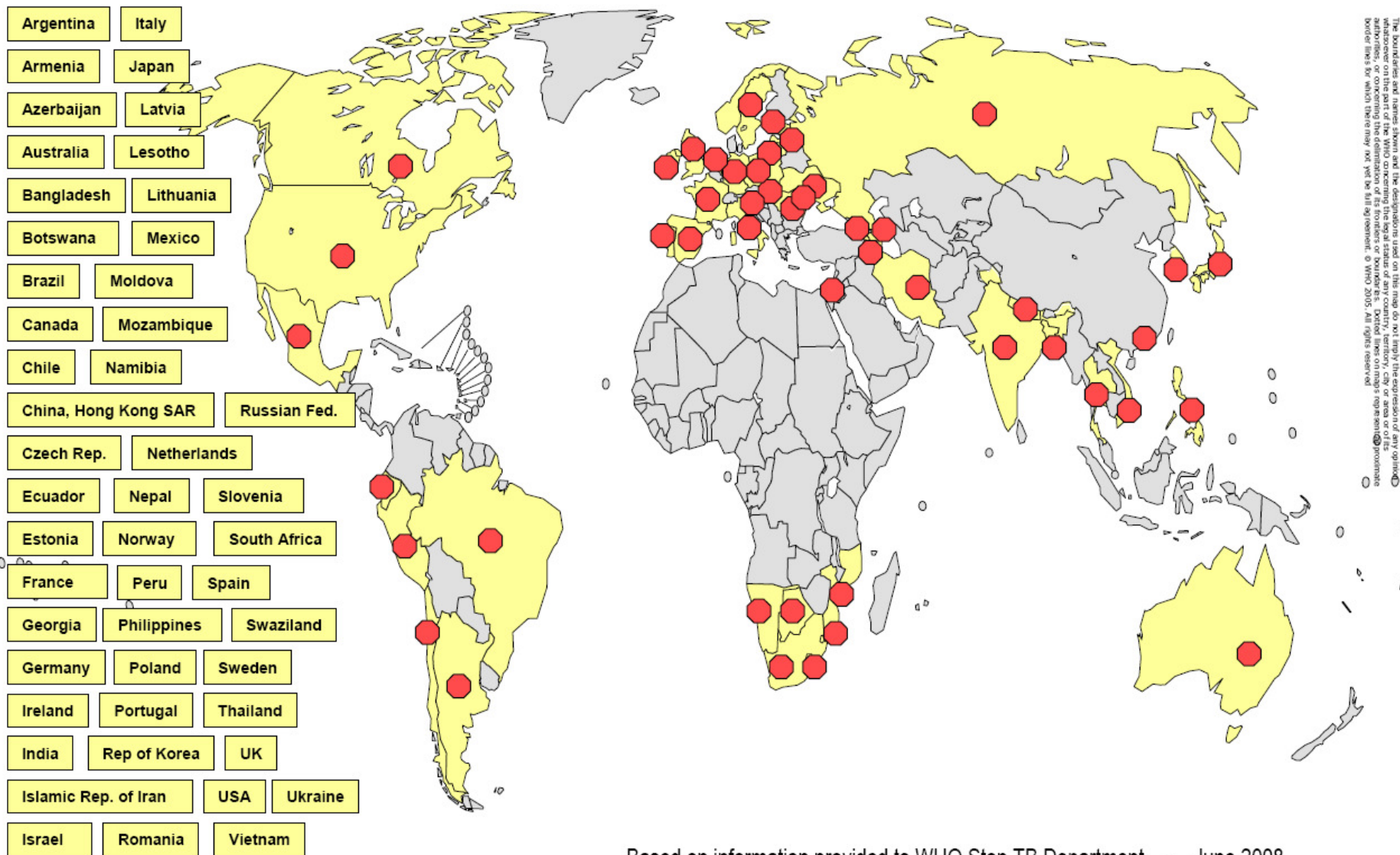
TMC207 shortens time to culture conversion in MDR population



$p=0.003$

N=47
6 HIV+

Countries with confirmed cases of XDR-TB as of November 2008



The boundaries and names shown and the designations used on this map do not imply the expression of any opinion whatsoever on the part of the WHO concerning the legal status of any country, territory, city or area or of its authorities, or concerning the delimitation of its frontiers or boundaries. Dotted lines on maps represent approximate border lines for which there may not yet be full agreement. © WHO 2008. All rights reserved.

Based on information provided to WHO Stop TB Department - June 2008

Meeting Outcomes

- New ideas, collaborations and networking
- HIV/TB Research Priorities Publication
- TB satellite symposium Tuesday at IAS meeting

