

Step Up for TB TB Policies Tracker

As the world rallies to end tuberculosis (TB) in the wake of the pandemic, updating TB response policies in a timely manner is essential to achieve the '3rd' Sustainable Development Goals (SDGs) and the 2023 UNHLM TB targets. This has become even more critical following the recent TB UNHLM in September 22nd.

The Stop TB Partnership is providing analysis of up-to-date TB policies alignment with internationally recommended TB guidelines to the high TB burden countries through the Step Up for TB (SUFT) report. SUFT was previously known as "Out of step" project and has been running since 2014. The continuous and consistent nature of this process underscores the value of regular policy tracking. The latest 2023 SUFT has meticulously scrutinized the policy landscape of 20 high TB burden countries.

The Stop TB Partnership is closely monitoring the alignment of TB policies in high TB burden countries with internationally recommended TB guidelines through the SUFT report. The ongoing and consistent nature of this initiative highlights the importance of continuously tracking policies. The latest SUFT report for 2023 has meticulously assessed the policy landscape in 20 high TB burden countries.

↓ SUFT 2020 REPORT

↓ SUFT 2023 REPORT

Key Focus Areas of the 2023 Survey

The 2023 'Step Up For TB' (SUFT) report encompasses a total of 35 policy indicators across three domains: diagnostics, treatment, and care.

↓ ADVOCACY TOOL KIT

SUFT e-portal

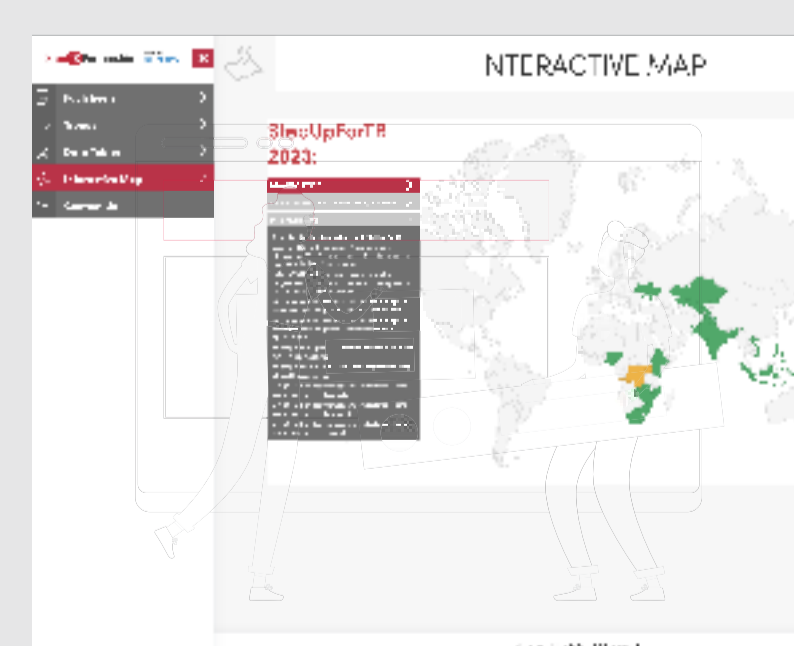
🌐 SUFT ELECTRONIC WEB-BASED TB POLICIES TRACKER

In 2020, the SUFT project expanded to include a comprehensive SUFT electronic web-based portal SUFT electronic web-based TB policies tracker hosted on the Stop TB Partnership's website. This portal is designed to help countries evaluate their progress in aligning their TB policies and guidelines with global recommendations.

The SUFT e-portal allows countries to login and update their information at their convenience. Thus, countries have the possibility of knowing not just their most recent status but also compare with neighbouring ones in their region, or on a global scale. After completing the survey, the portal automatically generates country factsheets, indicator tables, and an interactive map displaying the results. Additionally, it allows for the visualization of trends in specific indicators over a defined period.

The portal presents a country's TB policy status on its dashboard as soon as the data is updated and confirmed. It also sends regular reminders to countries to keep their TB policies up to date. The e-portal is user-friendly and offers easy access, as outlined below. It provides 24/7 access to the questionnaire, which can be edited by country National Tuberculosis Program (NTP) officials at a later stage. Furthermore, the SUFT e-portal offers various options for leaving comments online, whether it's about specific questions, domains, or the entire questionnaire.

Accessing the portal



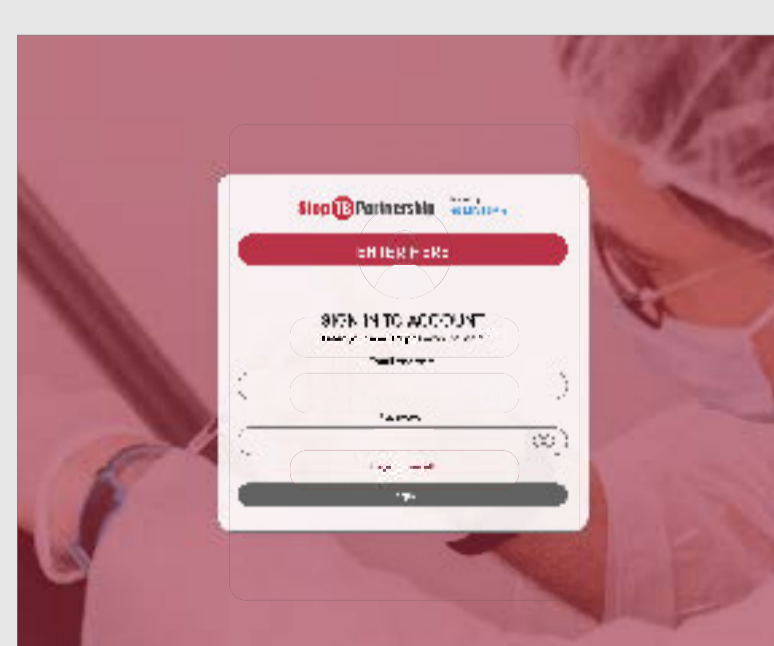
Visit <https://suft.stoptb.org/>

where you will be directed to the interactive map landing page without a need for login procedures.



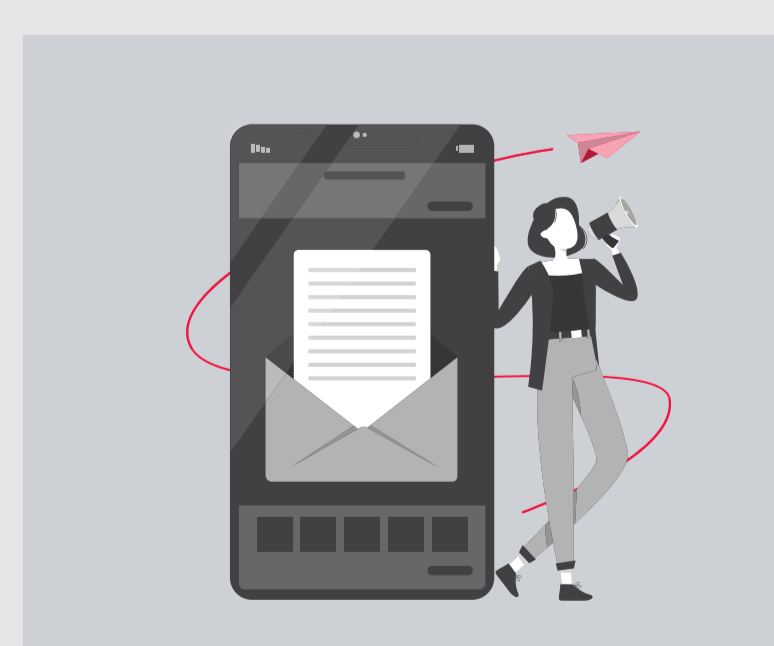
The side menu

offers access to country factsheets, trends, raw data, and other available information, including data from previous surveys.



NTP official representatives

can access advanced features using their unique username and password. The username is the email address of their choice, and the password is automatically generated and sent to the user.



Users can also request a password

by sending an email request to stepupfortb@stoptb.org.



For quick access via smartphones:

